

London Postal History Group

NOTEBOOK

No.19 October, 1974

EDITORIAL

For several years now this journal, and others, have been printed with the kind help of both our employer and members of the Print Room staff. Indeed, without the technical help and advice of the latter, even the generous granting of the use of equipment would have been to little avail, since our unhappy aptitude of creating mechanical mayhem would have prevented a single issue appearing.

There is now every prospect of a change in employment by the Editor and this may well be the last issue to be produced by the present printers. It is, therefore, most fitting to express the appreciation of postal historians all over the world for the facility of both staff and machines.

This does not mean we intend to cease publication but it will mean a greatly increased cost of production unless a reader can offer similar facilities to those enjoyed to date. Unless we hear to the contrary, however, quotations from commercial organisations will be sought to ensure the continued issue of this journal.

On another tack entirely, readers who were with us from the first issue may recall it was the intention not to fill the editorial with pleas for articles and thus far the contributions have provided sufficient to allow an issue to be produced four or five times a year. The point has been reached, however, when the balance of contributions across the wide range of time and types of London Postal History is not in balance. While this should not be considered an appeal it should be thought of as a slight Editorial cough to attract attention to what might be a problem. There is no shortage of items to be reprinted from other publications, either in the original or with more recent data and readers may consider that to bring articles scattered throughout a series of unrelated publications into one journal devoted to London is in itself no mean achievement. This certainly is one aim, but original contributions are always most welcome.

One final thought on this subject - if such a comment is required only every five years, things are not too bad.

John Parmenter, whose book on the horizontal diamonds is awaiting the printed covers for publication, is off for three or four years to Norway. His new address is given inside but this change of abode will not deter him from his PH work and he promises further working papers and monographs as time passes. We wish him well with his new work and will miss him at our London meetings. He suggests that replies to his detailed working papers be routed through the Editor of NOTEBOOK rather than sent to his new address in individual postings.

-O-O-O-O-O-O-O-O-O-O-O-O-O-O-O-

IN THIS ISSUE.....

page	i	London Postal History Group, Auction 3.8.74 results
	ii	The Buntingford Auction 28.9.1974 results.
	1	Redirection Charges
	2	General Post Receiving Houses
	4	Inland Branch, Upright Diamonds, by Keith Martin-Jones
	5	London Mis-Sort Stamps 1858 - 1955, by M.M. English
	12	Number Sixteen Cancellation Inland Office, Early Dates, MID S X OUT
	13	The 1905 Postmarks of London E.C., Further Issues, by Jeremy Greenwood
	14	Apex Down - and Up
	15	What The Auctions Tell
	16	Controllers Office, LPS Dept Experimental Machine Cancellations

© 1974 London Postal History Group or Contributor where named.

Hon Secretary: Derek Holliday,
4 Darwin Road, London W5 4BD

Hon Treasurer: John Grimmer,
48 York Road, New Barnet, Herts EN5 1LJ

Editor: Peter Forrestier Smith,
6 Church Manor, Bps.Stortford,Herts.CM23 5AE

to whom all correspondence should be addressed.

Auction August 3rd. 1974

Lot	Price	Lot	Price	Lot	Price	Lot	Price	Lot	Price
1	4.10	2	*	3	1.00	4	3.00	5	2.50
6	3.00	7	.75	8	2.10	9	1.00	10	2.00
11	*	12	3.60	13	*	14	.05	15	*
16	*	17	*	18	*	19	1.00	20	2.20
21	.25	22	1.50	23	2.60	24	4.10	25	2.00
26	1.60	27	2.50	28	.50	29	.90	30	1.10
31	1.70	32	1.00	33	1.70	34	1.60	35	1.30
36	.50	37	*	38	.90	39	1.60	40	.45
41	.25	42	1.30	43	2.00	44	2.00	45	3.60
46	2.80	47	1.75	48	2.10	49	1.60	50	*
51	1.20	52	1.00	53	3.10	54	.80	55	14.10
56	7.30	57	*	58	*	59	*	60	3.60
61	1.50	62	1.50	63	1.25	64	3.00	65	1.50
66	1.50	67	*	68	4.00	69	5.10	70	*
71	*	72	.75	73	*	74	5.10	75	2.00
76	4.00	77	.40	78	1.10	81	1.00	84	3.00
96	6.00								

a number of lots were brought along without being included in the catalogue and unless sold they are not listed above.

The sales analysis was Book £ 109.55

Room £ 35.75

£ 145.30

* indicates unsold

Lot	Price	Lot	Price	Lot	Price	Lot	Price	Lot	Price
1	1.10	2	*	3	4.10	4	4.10	5	2.60
6	7.50	7	11.25	8	1.70	9	*	10	1.50
11	3.00	12	4.10	13	4.00	14	2.30	15	6.25
16	3.20	17	2.50	18	4.10	19	5.10	20	2.00
21	2.00	22	3.10	23	8.10	24	4.00	25	8.00
26	1.60	27	.55	28	1.00	29	1.10	30	.60
31	3.10	32	5.75	33	.80	34	2.10	35	.75
36	1.40	37	2.20	38	1.20	39	8.25	40	1.10
41	3.10	42	1.40	43	3.00	44	.50	45	3.80
46	7.25	47	1.00	48	.80	49	1.00	50	3.80
51	1.10	52	1.30	53	2.60	54	1.20	55	1.20
56	2.50	57	1.50	58	3.20	59	4.00	60	8.25
61	1.00	62	1.60	63	4.10	64	10.50	65	.40
66	2.20	67	1.40	68	1.00	69	1.00	70	11.00
71	.40	72	1.10	73	.55	74	.75	75	1.00
76	3.00	77	5.10	78	5.20	79	2.80	80	.75
81	*	82	*	83	1.50	84	1.40	85	1.00
86	1.60	87	2.10	88	3.00	89	.75	90	4.20
91	2.00	92	2.40	93	4.00	94	3.00	95	1.90
96	1.20	97	1.40	98	4.10	99	*	100	1.00
101	4.20	102	3.00	103	*	104	*	105	*
106	2.20	107	3.70	108	1.50	109	*	110	3.00
111	3.90	112	3.00	113	.75	114	2.60	115	2.10
116	2.90	117	2.10	118	1.90	119	4.10	120	1.50
121	6.10	122	*	123	1.10	124	1.00	125	1.30
126	1.30	127	1.50	128	.75	129	*	130	*
131	1.60	132	2.20	133	*	134	2.70	135	1.10
136	*	137	.80	138	.85	139	*	140	*
141	.75	142	.85	143	.95	144	1.50	145	1.10
146	.75	147	4.00	148	*	149	1.60	150	2.00
151	2.10	152	*	153	*	154	3.50	155	*
156	1.90	157	1.60	158	*	159	*	160	*
161	2.10	162	1.30	163	3.00	164	.95	165	1.20
166	1.60	167	*	168	3.00	169	*	170	3.50
171	1.00	172	1.60	173	1.00	174	1.50	175	*
176	1.50	177	2.00	178	1.00	179	*	180	12.00

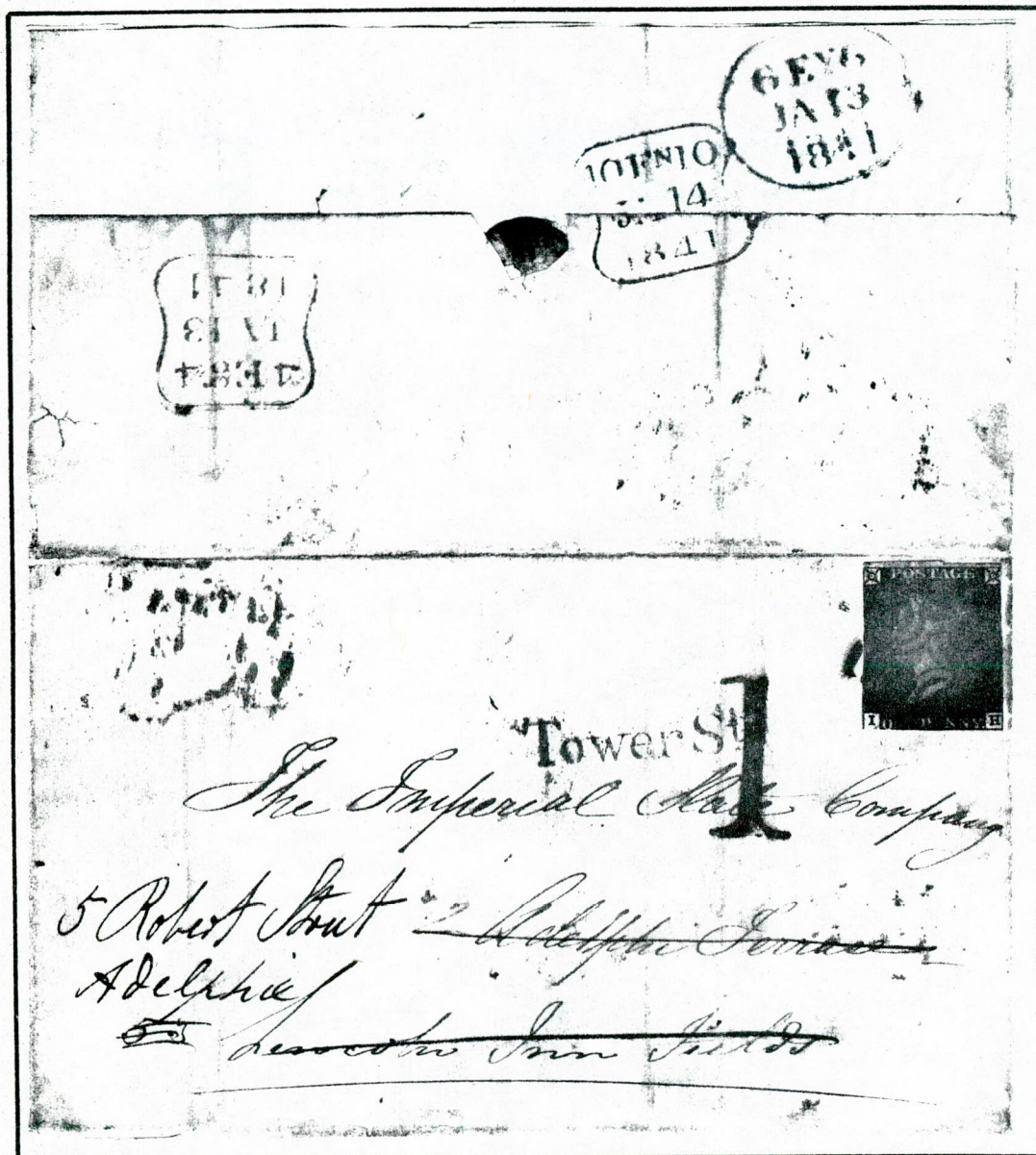
THE BUNTINGFORD AUCTION 28th. September 1974

Lot	Price	Lot	Price	Lot	Price	Lot	Price	Lot	Price
181	.40	182	1.60	183	1.60	184	1.10	185	.50
186	1.00	187	1.60	188	1.40	189	*	190	*
191	.50	192	1.50	193	.55	194	.40	195	.40
196	1.10	197	2.30	198	1.00	199	2.00	200	3.00
201	2.40	202	2.10	203	3.60	204	1.00	205	1.50
206	2.00	207	2.50	208	1.60	209	1.00	210	2.10
211	3.50	212	1.50	213	1.60	214	1.00	215	1.00
216	1.90	217	.40	218	*	219	2.90	220	.40
221	5.50	222	2.10	223	3.00	224	3.00	225	4.20
226	12.25	227	4.10	228	2.30	229	.50	230	1.00
231	*	232	*	233	3.00	234	2.00	235	1.10
236	*	237	11.25	238	*	239	*	240	*
241	2.70	242	1.50	243	.85	244	1.20	245	1.10
246	.50	247	*	248	.40	249	1.00	250	2.00

Total realisation £518.70

Redirection Charges

Readers may recall an article by Mr. E.A. Quinn entitled " The London Twopenny Post and Redirected Mail " which appeared in Notebook No.13. In this a distinction was made between the mark of the old Twopenny Post and that of the General Post. Examples from collections were asked to be reported, but only two came forth. One dated 28.3.1855 to Gateshead and Newcastle via London from Scotland and the other of 23.12.1853 to Basinghall St. from Brixton.



The item reproduced above was noted at Showpex and subsequently purchased. It carried a Plate 8 Black cancelled with the broken pointed London Cross in black, a neat Tower St., struck in Blue and the handsome " 1 " following the redirection from Adelphi Terrace to Robert Street. The item also had applied, in red, 4 eg JA 13 1841, 6 Ev. JA 13 1841 and Fn. JA 14 1841, all backstamps.

Tower Street had a Twopenny Post R.H. and no General Post R.H. (according to the 1836 listing of the P.O. Directory). This " 1 " would seem to be a further example of what must be a fairly difficult charge mark and might serve to stimulate response to the previous enquiry.

General Post Receiving Houses

This was the subject matter of our meeting on Saturday 19th October which, due to a clash of dates, was not as well attended as the subject would have normally attracted. Fortunately, George Crabb produced a delightful range of material and with a small selection from others yielded a first class afternoon. It was hoped to produce a schedule of the Receivers' initials in particular and as a first portion a list of initials and names are given below.

A	Mr Adams	E.K	Eleanor Keepe
C.A	Charles Adams	J.K	John Kirby
J.A	John Allins	A.L	Anthony Lissen
J.A	John Abrahams	D.L	Daniel Lockhurst
J.A	John Allen	G.L	George Luce
W.A	William Atkins	G.L	George Lambert
G.B	George Bowen	J.L	John Lloyd
H.B	Hugh Brockett	W.L	William Leeke
L.B	Lawrence Blacklocks	G.M	George Mortimer
L.B	Lionel Booth	J.M	John Morgan
J.B	John Barnet	J.M	James Magnes
R.B	Richard Best	S.M	Sarah Moule
W.B	William Boak	W.M	William Mott
W.B	William Bumstead	N	? Newman
A.C	Anne Cooke	R.O	Ralph Oldham
G.C	George Cross	P	Mr. Parker
J.C	John Chalfont	P	Partington
S.C	Samuel Champness	P	Mr. Pridden
W.C	William Craig	E.P.	Edward Powell
D	Dangerfield	J.P	John Place
M.D	Mary Davis	W.P	William Place
M.D	Matthew Days	W.P	William Parker
N.D	Norah Day	A.R	Abel Roper
G.E	George Eales	E.R	Edward Roberts
M.E	Michael Ellis	E.R	Edward Roberts
R.E	Richard Earlam	J.R	Jane Rappen
W.F	William Flexney	J.R	Joseph Robinson
W.F	William Farquason	J.R	James Robson
G.	Captain Grigsons	S.R	Sarah Roberts
G.	Mrs Grone or Grove	W.R	William Rouse
G.G	George Grimmett	W.R	William Randall
H.G	Humphrey Greensell	S	Mrs Smith
M.G	Matilda Griffin	S	Mrs Staltinborgh
J.G	Joshua Grocer	A.S	Alex Shepherd
R.G	Robert Genns	F.S	Francis Scarle
S.G	Samuel Gibs	G.S	George Sanders
T.G	Thomas Garthon	G.S	G. Streeting
W.G	William Griffith	I.S	Isaac Smith
B.H	Bartholomew Hagget	J.S	J. Smith
E.H	Edward Hagget	T.S	Thomas Stephenson
E.H	Edward Huchins	T.S	Thomas Simmes
E.H	Edward Hawkins	N.T	Nic Thatcher
E.H	Edmund Hodgson	T.T	Thomas Taylor
J.H	James Harris	A.V	Alice Venables
T.H	Thomas Hindes	E.V	Eliza Vaughan
I	Mrs Ivy	W.V	William Venables
G.J	George Johnson	W	Mrs Warwick
J.J	John Jackson	D.W	Daniel Wilkinson
J.J	Joseph Jones	J.W	John Ward
R.J	Richard Jones		

There are, of course, a great many more initials but the above are taken from the publication by Miss Bagust, the original of which gave both the location of

the office and the authority for the allocation.

Two examples of Receiver's names were shown at the meeting, other than the "typed" Partington, etc. One the name of HART and the other, unhappily, not clear. The

SAP O

mark appears to consist of six or seven characters, the first two being SA folowed by B,P or R, with O as the pentultimate letter and possibly M as the final. The

name is framed with curved ends as opposed to the square ends of the conventional square framed G.P. office mark.

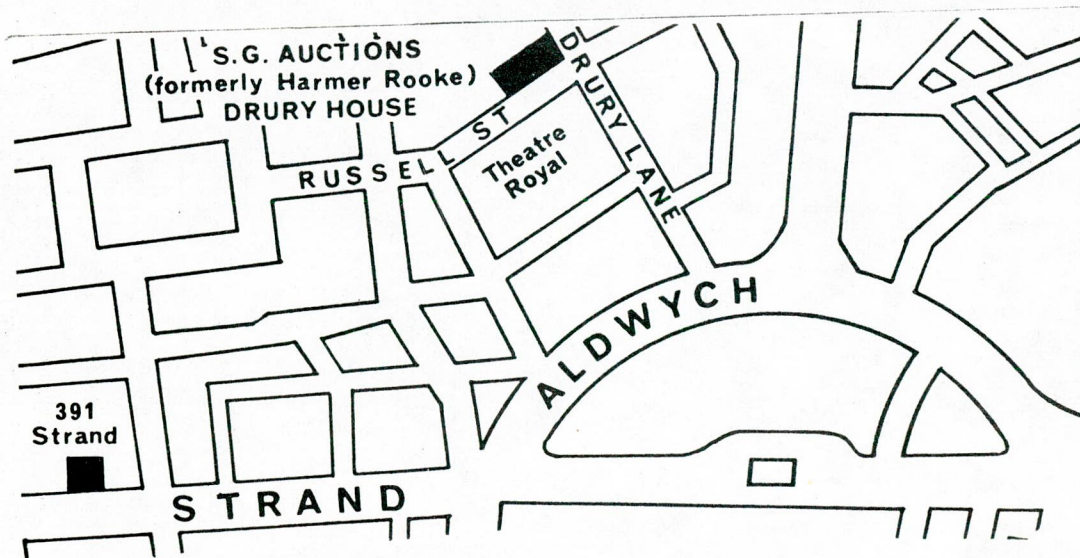
At present a schedule of initials appearing in auction lists and notes is being prepared for members to amend and add to from their own information.

Not only were the initial marks of Receivers examined but the framed names of the Offices themselves. It was interesting to note that not only was there a wide variety between the offices but also a range from the same office. One such was 104 Strand. A busy office which mail from the nearby taxation offices, the constant pounding of mail clearly called for frequent recut handstamps. In connection with the Strand, readers are invited to send details of Strand marks they have to Michael Champness, The Old Vicarage, Wendens Ambo, Saffron Walden, Essex CB11 4JY.

George Crabb made the point at the meeting of the well nigh impossible task of assembling a comprehensive London collection. Whilst many members are tending to specialise on a type of mark few seem to attempt to study the postal history of an area. This seems to have considerable merit as it would put together the use of the different marks in one office and provide a link across the various studies already being made.

Perhaps members would register their particular interests with the Editor, to avoid duplication of effort if for nothing else. By way of a starter he is hoping to tackle the London District Post Route 6, Deptford to Bexley.

In connection with this, please do not forget the subject of the next meeting which is a joint effort with the Kent Group on November 30th at the S.G. Auction rooms at the junction of Russell St. and Drury Lane starting at 2 p.m. The items for the meeting will be those relating to ' Kent in London ' - or ' London in Kent ' depending on ones point of view.



Inland Branch, Upright Diamonds, by K. Martin-Jones

Futher to the data given in Notebook 18, the following are now recorded.

Dubus series 24: 14 (with trace of outside ring)

it should be noted this series shows great variation in the shape of the diamond and of the figure and apart from being a 1,5,1,5 format hardly seem to be a group.

Dubus series 25: Has any reader seen ANY of these ?????

Dubus series 26: I have the following.....

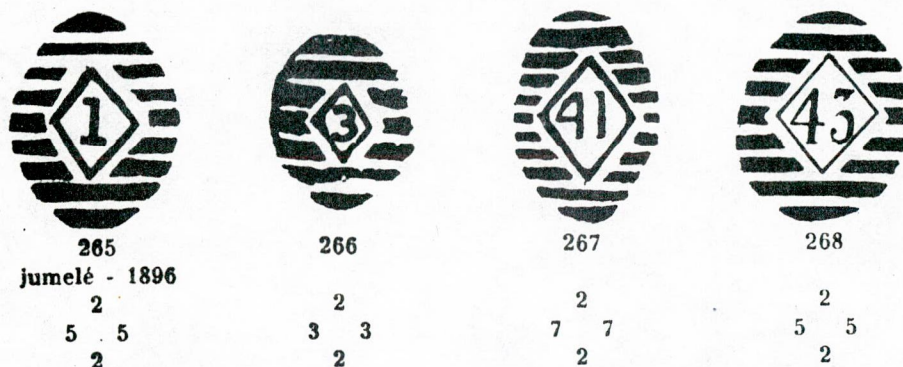
A	Small piece	plate ?
	Stamp only	plate 180
B	Stamp only	plate 181
C	Part of large cover, dated 30th.November,1875,2 x Pl.179	
D	Stamp only	plate 190
	Piece of thick envelope	$\frac{1}{2}$ d plate 12 and 3 x 1d plate 174

It looks as if these cancellations were used from 1874 to 1876 on large envelopes.

Please give plate numbers with any reports.

We illustrate below, by kind permission of M. Dubus his illustrations of type 25 and 26. Type 25 he states to be cancellations of various types not classified with any previous series. Series 26 M. Dubus records ' C ' on a cover dated 22nd March 1876 as well as ' B ' and ' D ' on adhesives off cover.

Series 25



Series 26



Readers are reminded to advise of all new purchases and recordings they make.

Horizontal Diamonds: Brian Smith,
41 Cranleigh Drive, SWANLEY, Kent. BR8 8NZ

Upright Diamonds: Keith Martin-Jones,
Eton House, Docking, KINGS LYNN, Norfolk.

LONDON MIS-SORT STAMPS 1858 - 1955, by M.M. English

The increase in use of the postal services after 1840 placed a great strain on the clerks engaged in sorting letters in the London District Office and the answer, which took many years to be implemented was to divide London into smaller districts, each operating as a separate "post town" might.

Started in 1856 it was not fully completed until 1860 the district into which London was divided were, at first,

East Central	(E.C.)
West Central	(W.C.)
North West	(N.W.)
North	(N)
North East	(N.E.)
South West	(S.W.)
South	(S)
South East	(S.E.)
East	(E.)
West	(W.)

Although the re-organisation received a great deal of publicity incorrect initials or addresses were frequently used and it was deemed necessary to introduce some form of mis-sort or mis-sent stamp (fig 1) These were first issued in May 1858 and remained in use in some offices until their final withdrawal on 24th February, 1890.

M = Mis-sort

NE = District Initials

D = Office Code (Hackney)



At first they were some 18 mm dia., but later types varied between 20mm and 22mm. Normally struck in black, impressions are known also in red and blue. The North and South East District Offices have the interesting feature of some office codes being double letters (fig 2).

Fig 1

The following list has been compiled from the Post Office Records Proof Impression Books, with additional data recorded by the late W.G. Stitt Dibden.

Readers are cautioned that due to constant recall and reissue, possible borrowing of a stamp from a neighbouring office and such activities which prove a headache to postal

historians, it cannot be assumed that the allocation of a code to a particular office means that a cover bearing their stamp was applied at that office.



Fig 2

NORTHERN DISTRICT	A	District Office	1858
	B	Barnet	1858
		Highbury	1860-17.2.1874
		Edmonton	Feb 1874
	BB	Upper Edmonton	1886
	C	Edmonton	1858
		Colney Hatch (which was renamed)	1861 -
		New Southgate	- 1863
		Finchley	30.6.73
	D	Enfield	1858 - 1859 (?)
		Finchley Church End	1886
		Highgate	1858
	F	Enfield	1861
		Finchley Church End	
	G	Holloway	1858
		Highgate	

Northern District (continued)	H	Ponders End	1858
		Finchley Church End	17.4.1884
		Holloway	1886
	J	Stoke Newington	1858
		Hornsey	
	K	Tottenham	1858
		Ponders End (transferred to English list	20.8.1872)
		Walthamstow	
		Finsbury Park	24.2.1879
	L	Waltham Cross	
		Southgate	1886
	M	Whetstone	
		Stoke Newington	
		Southgate	
	N	Tottenham	6.3.1866
		(transferred to English list 30.6.1873)	
	O	Waltham Cross	1861 - 30.6.1876
		Stoke Newington	
	P	Waltham Cross	
		Whetstone	
		Upper Holloway	
		Tottenham	
	Q	Palmers Green	
	R	Cheshunt	12.10.1863
		North Finchley	from 17.4.1884
		Upper Holloway	
	S	Winchmore Hill	12.8.1865-30.6.1876
		Whetstone	
	T	Winchmore Hill	1860-1865
		Wood Green	1865-1876
	U	Wood Green	1876

NORTH WESTERN DISTRICT

A	District Office	1858
B	Edgware	1858
C	Hampstead	1858
D	Harrow	1858
E	Hendon	1858
F	Kilburn	1858
G	St. John's Wood	1858
H	Stanmore	1858
J	Sudbury (transferred to English list 15.5.1861)	
	Willesden	from 1870
K	The Hyde	1858
L	Willesden	1858
M	Kentish Town	29.5.1875
N	Mill Hill	27.7.1875

NORTH EASTERN DISTRICT

A	District Office	1858
B	Chigwell	1858
C	Clapton	1858-1870
D	Hackney	1858-1876
E	Leytonstone	1858-1887
F	Loughton	1858
G	Leyton	1858-1869
H	Woodford	1858

WESTERN DISTRICT	A	District Office		1858
	B	Acton		1858
	C	Notting Hill		1861
		Brentford		1875
	D	Brentford		1858
		Ealing	from	1861
	E	Hammersmith		1861
	F	Hanwell	from	1861
	G	Hanwell		1858
		Hounslow	from	1864
	H	Hounslow		1858
		Isleworth		1864-1870
		(transferred to English list after 1870)		
	J	Isleworth		1858
		Kensington	from	1864
	K	Kensington		1858
		Maida Hill	from	12.5.1865
		(created a branch office September 1868 with 'Late Fee' facilities)		
	L	Paddington		1859
		(created a branch office 31.3.1868 with 'Late Fee' facilities)		
		Notting Hill		9.10.1859-1861
		Turnham Green	from	1886
		(created a 'Late Fee' office 26.1.1874)		
	M	Paddington		1858
		Shepherds Bush	from	1886
	N	Shepherds Bush		1859-1861
		Southall		1861
	O	Southall		1859-1861
		Turnham Green		1870
	R	Kensal Town		12.7.1886
EASTERN DISTRICT	A	District Office		1858
	B	Poplar		1858
		Barking	from	1870
		Bethnal Green	from	1875
		(created a Branch Office 1868 with 'Late Fee' facilities)		
	C	Barking		
		Bow		1870
	D	Clapton	from	1870
		Canning Town		1871-1874
		Ilford		1871-1874
		Hackney	from	1876
	G	Ilford		
		Poplar	from	1870
	H	Romford		
		Leyton	from	1869
		(ceased by 1874)		
	J	Stratford		
		Leytonstone	from	1887
	K	Walthamstow		
		North Woolwich	before	1887
	L	Plaistow	before	1887
	M	Poplar		1861-1870
		North Woolwich		1870-1885/1886

Eastern District (continued)	N	Plaistow		1870
		Startford	before	1874
	O	Victoria Docks	before	1887

SOUTH EASTERN DISTRICTS

A	District Office		1858
B	Beckenham	withdrawn	16.5.1875
C	Bickley		1858
	Blackheath		
D	Bromley		1858
	Camberwell		1868
E	Charlton		1858
	Catford		1868
F	Chislehurst	withdrawn	16.5.1875
G	Deptford		1858
H	Eltham		1858
	Dulwich		1868
J	Erith		1858
	Eltham		
K	Footscray	withdrawn	16.5.1875
L	Greenwich		
	Forrest Hill		
M	Lessness Heath		
	Greenwich		
N	Lewisham		
	Kennington		
O	Peckham		
	Lewisham		
P	Benge	withdrawn	16.5.1875
R	Plumstead		
	South Norwood		
S	Rotherhithe		
	Peckham		
T	Sydenham		
	Anerley		
V	Welling		
	Sydenham		
W	Woolwich		
	Rotherhithe		
X	Sydenham		
DA	New Cross		17.11.1869
AA	Herne Hill		19.7.1870
AB	Brockley		17.11.1869
P	Walthamstow		
	Turnham Green	before	1874
CP	Crystal Palace		17.11.1869
Q	Norwood		17.11.1869
NA	Lee		19.1.1870
LX	Lower Sydenham		19.1.1870
CA	S.E. District Office		17.11.69
BF	Brockley		17.11.1869
PA	Lower Norwood		26.1.1870
AW	Shooters Hill		30.9.1870

SOUTHERN DISTRICT

A	District Office		
B	Brixton	to SWD	1. 3.1868 (a)
C	Camberwell	to SED	1. 4.1868 (a)
D	Carshalton	to English list	1. 1.1869 (a)
E	Clapham	to SWD	1. 3.1868 (a)

(a) use of X within circle ceased before 1868

Southern District (continued)	F	Croydon (this office was never in the London District. The issue of the stamp was an exception to the rule)	
	G	Dulwich	to SED April 1868
	H	Mitcham	to English list 25.2.1868
		(use of stamp ceased 1860)	
		Merton	
		(transferred to SWD March 1868 and English list 1871)	
	J	Norwood	
		Mitcham	
	K	South Lambeth	15.5.1861
		Norwood	
	L	Stockwell	15.5.1861
		South Lambeth	
	M	Steatham	
		Stockwell	
		South Norwood	1864
	N	Tooting	
		Streatham	
		Stockwell	
	O	Walworth	
		Sutton	
		Streatham	
	P	Tooting	15.5.1861
		Thornton Heath	
		Sutton	
	R	Walworth	
		Tooting	
		Thornton Heath	
	S	Walworth	
		Tooting	
		Balham	
		South Kensington	
	T	South Norwood	2.5.1864
		Walworth	
		Churton Street B.O.	
	V	Barnes	24.4.1883
	W	Earls Court	21.1.21880

SOUTH WESTERN DISTRICT

A	District Office	1858
B	Battersea	1858
C	Brompton	1858
D	Fulham	1858
	Chelsea	
E	Hampton	1858
F	Kempton	1858
	Fulham	1868
G	Mortlake	1858
H	Petersham	1858
	Mortlake	
J	Putney	1858
K	Richmond	1858
	South Lambeth	1868
L	Sunbury	1858
	Stockwell	1868
M	Teddington	1858
	Streatham	1868
N	Twickenham	1858
	Tooting	1868

South Western District
(continued)

O Wandsworth
P Wimbledon

CENTRAL DISTRICT (EAST)

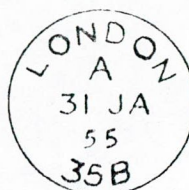
A District Office

CENTRAL DISTRICT (WEST)

A District Office
B St. Martin's Place

There was a further rearrangement of the districts when on 1st April, 1868 the Southern District was absorbed by the South Eastern and South Western Districts. The "S" code offices were allowed to lapse for a time but were later re-allocated. 1869 saw the absorption of the North Eastern District by the Eastern District.

Following these particular marks came redesigned types in 1890 when the CPO issued a list of code numbers for use in explanatory and mis-sort marks. The new steel handstamps had at first code "M" this being followed by code "A" for evening, "B" for morning and "C" afternoon.

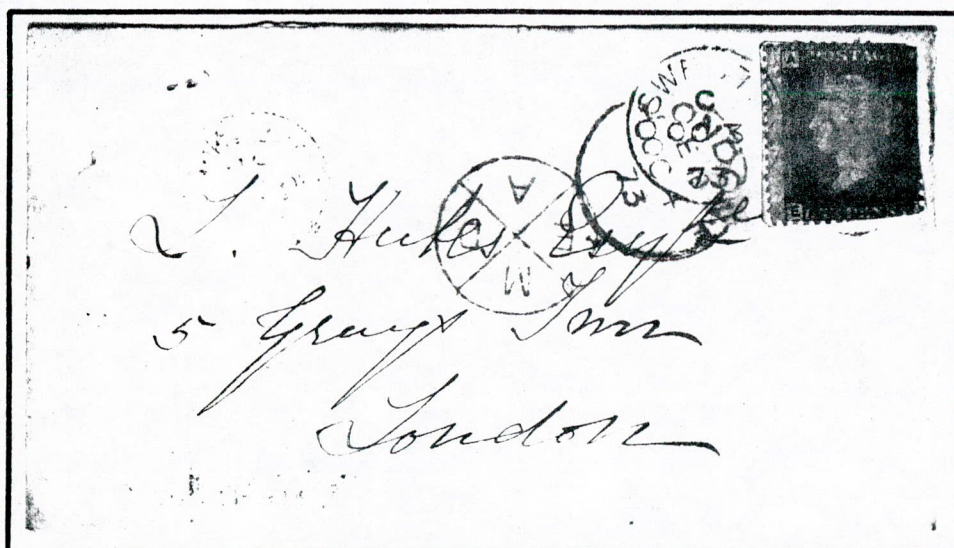


These mis-sort codes were introduced into machine cancellations including Krag and Universals and also now appears in the rubber packet stamps.

The following list shows the code numbers issued during the period 1890 - 1949. The British Postmark Society has issued during the period 1890 - 1949. The British Postmark Society has issued a check list of the various handstamps used with this series (BPS Bulletin Jan 71 et seq.)

1	Highgate	11b	Poplar	26	North Kensington
2	East Finchley	12	Bow	26b	South Lambeth
3	Whetstone	13	Stratford	27	Clapham
3b	Hornsey	14	East Ham	27b	Stockwell
4	Hampstead	15	Highbury	28	Tooting
4b	Southgate	16	Woolwich	28b	Streatham
5	Hendon	17	Leytonstone	29	Forest Gate
5b	Holloway	18	Deptford	30	Lee
6	E.C. Sorting Office	19	Finsbury Park	30b	Maida Hill
6a	E.C. Postman's Office	20	Greenwick	31	Wandsworth
6b	Clapton	21	Charlton	31b	Battersea
7	Stoke Newington	21b	Rotherhithe	32	Putney
8	West Brompton	22	Plaistow	33	Mortlake
8b	Hackney	23	Brockley	34	Earls Court
9	Kentish Town	23b	Brixton	34b	Acton
10	South Kensington	24	Dulwich	35	Bethnal Green
11	Chelsea	25	Sydenham	35b	Ealing

36	Balham	51	New Southgate	70	Anerley
36b	Hanwell	51b	Winchmore Hill	71	Catford
37	Eltham	52	Herne Hill	72	West Norwood
37b	Notting Hill Gate	52b	Wood Green	73	W.C.D.O.
38	Kensington	53	Homerton	74	Vacant
39	Hammersmith	53b	Upper Holloway	75	Paddington D.O.
39b	Shepherds Bush	54	Norwood	76	New Cross
40	Vacant	55	West Kensington	77	East Dulwich
41	Barnes	56	Woodford and	78	S.E. D.O.
41b	St. John's Wood		South Woodford	79	S.W. D.O.
42	Walworth	57	Chiswick	80	Tottenham
43	Golders Green	58	Mill Hill	81	Edmonton, Lower
44	Manor Park	59	West Wimbledon	82	Leyton
44b	The Hyde	60	Kilburn	83	Edmonton, Upper
45	Vacant	61	Willesden	84	Chingford
46	Palmers Green	62	South Tottenham	85	Walthamstow
46b	Feltham	63	Wimbledon	86	N.W. D.O.
47	Finchley Church End	64	West Ealing	87	N. D.O.
48	North Finchley	65	Camberwell	88	E. D.O.
48b	Forest Hill	66	Lewisham	89	W. D.O.
49	Abbey Wood	67	Peckham	90	Muswell Hill
49b	South Norwood	68	Kennington	91	Cricklewood
50	Victoria Docks and North Woolwich	69	Blackheath		



The envelope carries a reused penny plate, cancelled with the Oswestry duplex, 595, dated OC 3 / 73, code C. It has the Eastern District mark, M above A below and is struck in red.

(envelope contributed by Derek Holliday)

NUMBER SIXTEEN CANCELLATION

The item in the previous issue's Editorial has not produced a firm answer, but J.R. Henderson had some useful observation.

1. The single circle 16. is not a telegraphic cancellation stamp. My guess is that it is a stamp used by a Postman - probably in the Chief Office - for obliterating postage stamps which were not cancelled at the office of posting.
2. Goswell Rd. P.O. was outside the City area in 1883 and could have forwarded the registered letter for Aylsham to another office for onward transmission and not necessarily the Chief Office. I read of a similar case where the letter was sent to HOUNSLOW for onward transmission.
3. Brumell's reference to Queen Victoria Street rather baffles me. I visited the National Library Edinburgh and the Edinburgh Library (Scottish Section) and in three different directories I found that an office was opened in Queen Victoria Street in 1876/77. In 1883 it was actually a Branch Office.
4. There were 3 offices in Goswell Rd. EC at one time, one of them being a Branch Office, the other two being No.114 and No.237. In 1883 No.114 the owner was one Pratt Eliza Rowland, Newsagent. Prior to that the office was in 116/118 with the owner shown as John Shillipson, Tea Dealer.
(P.O. R.H. Money Order & Telegraph Office & SB Office.)

One clue turned up from the Editor's cutting files was a letter published in Stamp Collecting on 22nd. April 1966.

Headed " Victoria St. E.C. ", Ian Smillie of Edinburgh refers to a Parcel Post label reading " London Q.V.S., 128a, Queen Victoria St., E.C. " The datestamp is noted as clearly showing " 128A Queen Victoria St. B.O. " with "E.C." at the foot. The date itself is not clear, the stamps had been removed but the label appeared to be one of the Victorian era.

From this the 1887 listing and footnote by Brumell appear to be supported, if not fully proved. Surely someone, somewhere MUST have another example on cover?

-o-o-o-o-o-o-o-o-o-o-o-o-o-

INLAND OFFICE, Early Dates.

Both Dubus and Westley fail to give a firm date in May 1844 for the first use of the diamond obliterator. The Proof Impression Book helps not at all by giving the date of issue as May 1844.

By way of encouraging readers to check their own covers, the Editor records a 10 in diamond on entire dated May 18th.

May we have your bids (of earlier dates that is!) please ?

-o-o-o-o-o-o-o-o-o-o-o-o-o-

MID S X OUT

From J. Holmes of Canada comes a FREE dated from London April the twenty first 1812, signed Longfield and addressed to Cork and bearing, in red, a hand stamp in serif capitals MID S X OUT. Any information would be most appreciated.

-o-o-o-o-o-o-o-o-o-o-o-o-o-

The 1905 Postmarks of London E.C., Further Issues, by Jeremy Greenwood.

Another large series of new stamps issued in September was of the scroll or hooded variety. They are referred to as machine dies, presumably for use in Pearson Hill machines.

There are number of variants of this design and the first (fig.1) is referred to in the records as type 5 and the second (fig.2) as type 3. However, later the type 5 with 2 code letters at the base is also referred to as type 5!

Only one of the first type is shown, for use on collections from larger Branch Offices (B.O.'s) at 6 p.m. and 7 p.m. with 6.45 p.m. and 7.45 p.m. clock time shown respectively.

The second type was used for the following duties:

- | | |
|--------|--|
| code F | collections from the larger B.O.'s on evening duty and on Saturdays for the cancellation of unobliterated letters from the same. |
| K | Chief Office collections at 5.30, 9, 10, 10.30 and 10.45 p.m.-town. Withdrawn ' out of order ' at unspecified date. |
| I | Consul stamp (sic) |
| L | Used on correspondence found amongst official letters |
| O | Larger B.O.'s - 1.15 a.m. and 3.15 a.m. collections |
| R | Larger B.O.'s - evening duty - withdrawn ' out of order ' at an unspecified date. |
| S | Larger B.O.'s - evening and midnight duties |
| T,U, | Chief Office country collections. |
| V,Y | T & U were also used on correspondence from the Board of Trade at 6 p.m. on Thursday |
| W | Throgmorton Ave. B.O., 7.45 p.m. clock time |
| X | Leadenhall St. B.O. Friday's Correspondence; 7 p.m. clock time |
| BA | 47 Cannon St. B.O. 7.45 p.m. clock time |
| BB | Gracechurch Street B.O. 7.45 p.m. clock time |
| BC | Leadenhall St. B.O. 7.45 p.m. clock time
Broken 20.8.1908 and replaced from reserve |
| BE | Eastcheap B.O. 7.45 p.m. clock time |
| BF | Gracechurch St. B.O. 7.45 p.m. clock time, country letters |

A further series of impressions is recorded from stamps with codes beginning with X, also all dated 14th. September, 1905 :

- | | |
|------|--|
| XA | Used on letters found amongst newspapers |
| XB | Used on 1.15 a.m. collection from smaller B.O.'s, T.S.O.'s and P.B.'s |
| XD & | |
| XE | Withdrawn - out of order |
| XF | Used on the 3.15 a.m. collection from smaller B.O.'s, T.S.O.'s & P.B.'s |
| XG | Used on the 5 a.m. collection from Smithfield B.O. - 5.45 p.m. clock time. |
| XH | Used on the 6 p.m. collection from Smithfield B.O. - 7 p.m. clock time |



fig 1

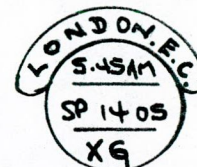


fig 2

- XI Used on unobliterated letters from the 3.15 a.m. collections and on unobliterated letters from district and sub-district correspondence.
- XK Used on letters found amongst newspapers
- XM Used on the 12 midnight collection from Fleet St. B.O. Tuesday - Saturday, with an a.m. clock time.
- XN No details noted

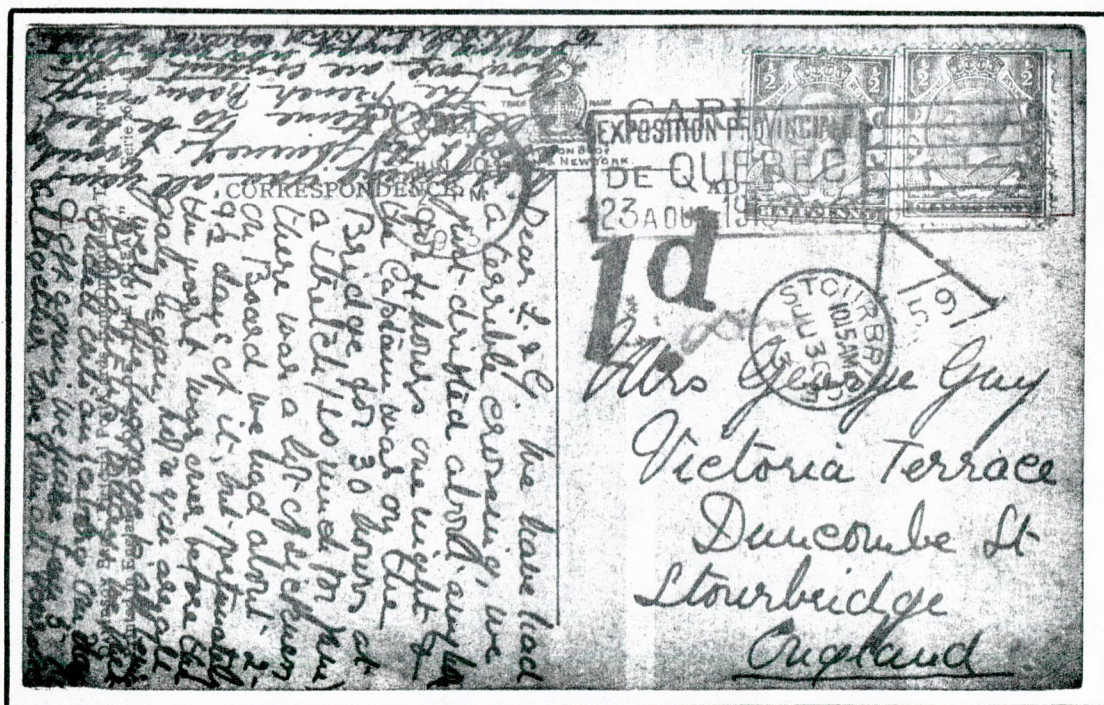
Acknowledgement

The above details have been compiled from documents in the National Postal Museum by kind permission of the Curator, Mr. A.R. de Righi

-0-0-0-0-0-0-0-0-0-0-0-0-0-0-

Apex Down - and Up

In ' Notebook 18 ', a preliminary enquiry was made about the triangular markings with a view to expanding the few notes appearing in Alcock & Holland. In a letter from Joe Henderson it is understood he is researching these marks and readers are invited to send direct to him full details of all material they have. The types include those with code numbers, letters and those shown in the original request. The only qualification is that the item shall be used postally and it does not have to be confined to London. One such is illustrated below.



Clearly posted, or at least written, on board on the last day of a terrible crossing, the card did not receive a Paquebot mark, but was machine cancelled Quebec 20.6.1933. The triangular mark under a bright light and with a glass seems to be " 459 " which is LINGFIELD in triangular surcharge stamps, Kirton Lindsey in the England & Wales series. Stourbridge is 750. Suggestions as to a valid interpretation welcome.

Information on any triangulars to:

J.R.Henderson, c/o Taylor, 28 Newhailes Ave., Musselburgh, Midlothian EH21 6DW

WHAT THE AUCTIONS TELL.....Robson Lowe 31st. January, 1974

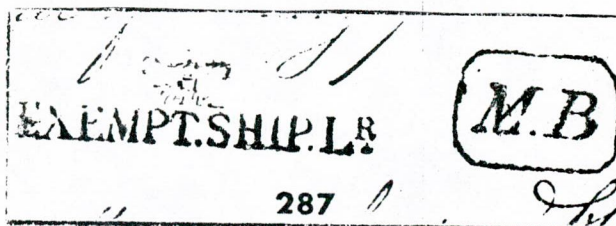
Lot	Description	Valuation	Realisation
1194	1662 E.L. from Dublin addressed " for Mr. John Morris at the fflyinge horse in Cornehill, London" showing on the reverse "AV/29" Bishop mark ***. A very early date	£120	£180
1226	1791 E.L. to Edinburgh showing circular framed " CHARLES STREET SOHO/Street/ing " and fancy "FREE/P"(W 66)** to ***	£ 70	£ 95
1242	1762 E.L. showing "PENNY/POST/PAID" of the St. Pauls Office * to ***	£ 40	£ 52

Robson Lowe 14th. May 1974 (Ship Letters)

249	1810 E. from Hamburg showing the scarce " SHIP LETTER " c.d.s. (S16) 1 to ***	£100	£100
257	1815 E.L. (slightly torn) from London to Cape Town showing across join the large circular "POST PAID WITHDRAWN SHIP LETTER/Crown/LONDON" d.s. (PPW1) 1 to ***, but very good for this rare mark.	£ 85	£ 85
258	1815 E.L. from London to Bordeaux showing across join "POST PAID WITH-DRAWN SHIP LETTER/Crown/LONDON/ c.d.s. (PPW1) * to ** only and on face "ANGLETERRE/PAS CALAIS" in red ** to ***	£ 45	£ 60
270	1829 Soldiers' E.L. from Quilone to Ireland showing large circular framed "INDIA SOLDIER &/3/LONDON"(In. Sol. 5)** to *** and across join "MADRAS/free/SOLDIERS LETTER" c.d.s. in red **. Somewhat stained and creased	£ 60	£ 65
278	1839 E.L. from Rio de Janerio to London showing on reverse manuscript " only single Fred Huth & Co ", on the front the rate has been altered from "2/8" to "1/4" and the scarce oval "REBATE/Crown/SHIP LETTER OFFICE" d.s. (REB 1) has been applied. The E.L. also shows on the reverse a strp-type "FOLKSTONE/SHIP LETTER"(S3), mostly ** to ***, a scarce and interesting item.	£125	£195
287	1849 Consignee's E. from Calais to London showing "Crown/ EXEMPT SHIP LR"(Ex2) and alongside a boxed "MB" (MB1) mostly ***. A scarce and attractive item	£45	£125



1194



287

Controllers Office, LPS Dept.

The following information has been received.....

The assumption that the postmark was a receiving mark is correct, being applied to incoming mail in the department concerned, i.e. the office of the Controller of the London Postal Service. Incidentally, according to an Establishment Book of 1903, the addressee of the letter, Mr. W.H. Threlfall, was the 30th out of 57 3rd Class Clerks in the Controller's Office, and it is probable that the Controller's Office was then housed in " GPO East " (i.e. the New General Post Office of 1829) in St Martins le Grand since the present headquarters of the London postal service (King Edward Building) was not occupied until 1910.

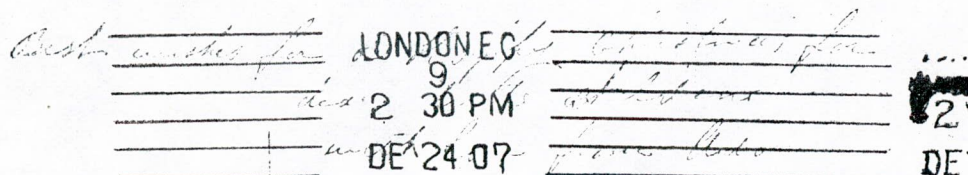
The letter with the information was signed by Mrs J.D. Farrugia, Assistant Curator, National Postal Museum. It is welcome news to all researchers that The Museum has obtained the services of one so interested in postal history.

-0-0-0-0-0-0-0-0-0-0-0-0-0-0-

Experimental Machine Cancellations

More postal historians are recognising the interest and merits of machine cancellations, with the still available post card yielding much useful information by way of example.

One such experimental mark, unremarked by Stitt Dibden in " Early Machine Cancellations " is a Krag which has a (between LONDON EC and the time. This mark is recorded in the 8th. supplement to ' Postmarks of Gt. Britain and Ireland '.



According to notes compiled by Derek Holliday the dates of use are:

early 24.12.1907 late 30.9.1908

with only five examples recorded. These may perhaps be unremarks by owners, or by the browsers.

Should any be located, a note of the date to Derek Holliday would be appreciated.

-0-0-0-0-0-0-0-0-0-0-0-0-0-0-

Change of Address

It was with considerable alarm we heard that John Parmenter had been posted abroad, slightly allayed only when it was discovered this referred to a change of employment rather than having adhesive labels affixed. His new address is:

John Parmenter B. Christopher - Sensgate 32, STANANGER, Norway.